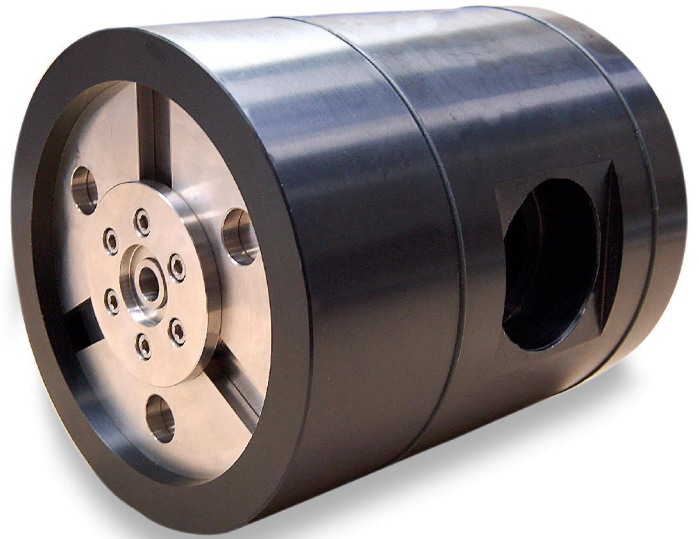


ROTARY METERS SERIES FMR-HP



- ✓ DN50 – DN100 (2" – 4")
- ✓ ANSI 300 / ANSI 600
- ✓ 1 – 400 m³/h (35 – 16,000 acfh)
- ✓ 1 : 100 RANGEABILITY
- ✓ SQUARE IMPELLERS

- ✓ ROBUST CONSTRUCTION
- ✓ EASY LOCAL REPAIR
- ✓ EXCHANGEABLE CARTRIDGE
- ✓ INTEGRATED BYPASS
- ✓ TAMPER PROOF INDEX

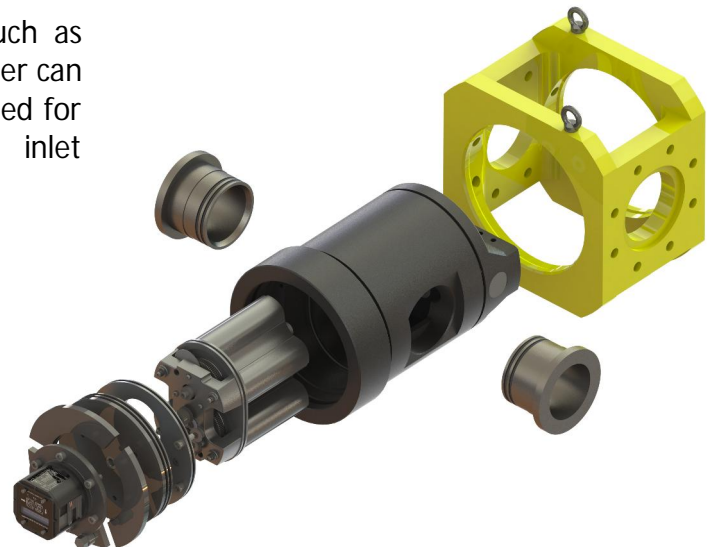
The FMG-HP series of rotary gas meters is designed to meet the highest demands of reliable and accurate measurement of gas flow under high pressure conditions. The meters fully comply with the EN12480 and OIML R137.

The actual meter body is made from aluminum and is kept in position by a steel meter housing. This housing holds the meter body, without any stress, in position between the adjacent flanges. Since the meter body is not affected by stress from the flanges or the piping, the clearances between the impellers and the body are optimized. As such the superb metrological performance achieved in the low pressure FMG rotary meter is maintained under high pressure conditions as well.

Due to the large rangeability of 1:100, the FMG-HP rotary meter is very suitable for small city gate stations as the actual load of this type of station varies widely.

Square impellers and improved position of the main bearings makes the cartridge very robust and less sensitive to flow and pressure shocks.

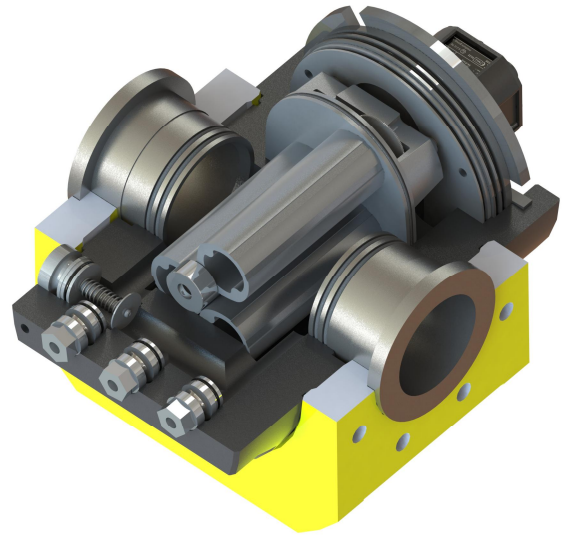
Unlike other approved flow metering devices, such as turbine meters and ultrasonic meters, a rotary meter can be installed close to regulators and without the need for extended straight pipe or specially prepared inlet sections.



OPTIONS: ENCODER / MULTIPLE CONNECTORS / TOTALLY SEALED / INSTRUMENT DRIVE / SIDE READING / HF PULSERS / INTEGRATED BYPASS

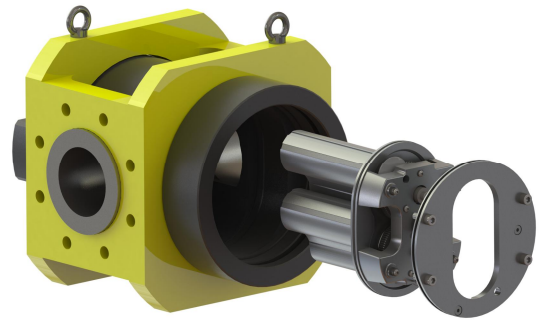
BYPASS FOR SECURITY OF SUPPLY

The FMG-HP series can be equipped with a spring loaded bypass valve. If a meter locks, the differential over the bypass valve will increase and the valve will open allowing gas to pass. This security of supply feature makes the FMR-HP suitable for use in critical installations where gas flow cannot be interrupted. The opening of the bypass can be monitored by measuring the differential over the meter.



EXCHANGEABLE CARTRIDGE

A compact exchangeable aluminum cartridge allows local repair, on-site cleaning and exchange. A pre-calibrated cartridge can be exchanged without affecting the accuracy. To access the cartridge only a relatively small and light weight cover needs to be removed.



Technical Data	imperial metric	3.5M G65	5.5M G100	7M -	9M G160	9M G160	11M -	11M -	16M G250
Displaced volume	cf	0,025	0,041	0,050	0,063	0,069	0,090	0,090	0,111
	dm ³	0,72	1,16	1,43	1,80	1,98	2,57	2,57	3,17
Nominal Pipe Size	in.	2	3	3	3	3	3	4	4
	mm	50	80	80	80	80	80	100	100
Base Rating (Qmax)	acfh	3500	5500	7000	9000	9000	11000	11000	16000
	m ³ /h	100	160	200	250	250	325	325	400
Rangeability +/- 1%	ratio	50	50	50	50	50	50	50	50
Rangeability +/- 2%	ratio	100	100	100	100	100	100	100	100
Max. Operating Pressure (MAOP)	psig	1480	1480	1480	1480	1480	1480	1480	1480
	kPa	10200	10200	10200	10200	10200	10200	10200	10200
Temperature Range	deg.F	-40 to +140							
	deg.C	-40 to +60							
Start Rate	cfh	2,0	4,2	4,2	7,0	10,5	12,3	12,3	17,5
	m ³ /h	0,08	0,12	0,12	0,20	0,30	0,35	0,35	0,50
Stop Rate	cfh	2,5	3,5	3,5	6,3	8,8	10,5	10,5	12,3
	m ³ /h	0,07	0,10	0,10	0,18	0,25	0,30	0,30	0,35
Average Differential @ 100% Flow Natural Gas	in. w.c.	0,8	1,0	1,2	1,4	2,0	2,2	2,0	2,6
	Pa	200	250	300	350	500	550	500	650
Drive Rate Index, ID	cf/rev	10	10	10	10	100	100	100	100
	m ³ /rev	0,1	1	1	1	1	1	1	1
Flange-to-Flange	in.	10-3/4	10-3/4	10-3/4	10-3/4	14-3/4	14-3/4	14-3/4	14-3/4
	mm	273	273	273	273	375	375	375	375
Flange Connection	ANSI	600RF	600RF	600RF	600RF	600RF	600RF	600RF	600RF
Net Weight ⁽²⁾	lbs.	88	103	112	128	198	209	253	264
	kg	40	47	51	58	90	95	115	120

2) weight may vary with accessories)

US Patent Nbr. 8,161,812

Subject to changes without prior notice. All rights reserved.

FMR-HP FEN001 rev.1

