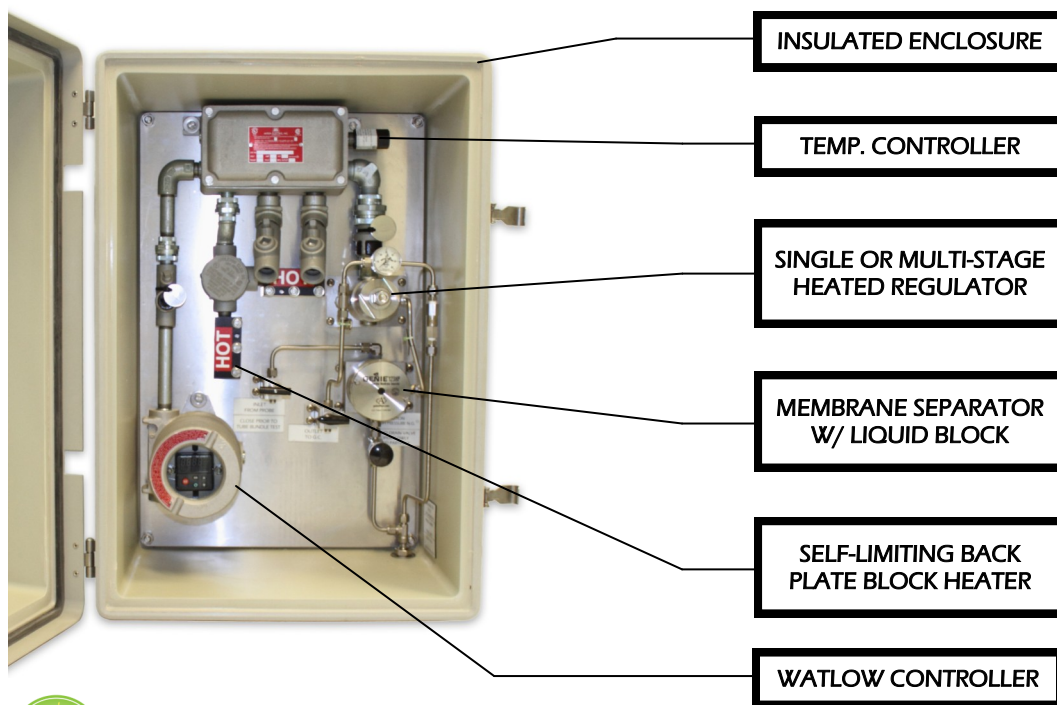


Mustang® Sample Conditioning System

P53



ENVIRONMENTALLY AWARE™ PRODUCT. THIS SYSTEM DOES NOT VENT NATURAL GAS INTO THE ATMOSPHERE.

Analytically Accurate® Technology

The Mustang® P53 Sample Conditioning System (MSCS) ensures optimal performance of gas analyzers by delivering a heated sample through patented technology to the analytical device.

The MSCS avoids costly errors resulting from hydrocarbon dew point drop out by maintaining at least 30°F above the expected hydrocarbon dew point.

The gas sample is heated inside of the regulator before and after the pressure is reduced eliminating hydrocarbon liquid condensation caused by the Joule-Thomson effect during the pressure reduction.

- ▶ cETLus Certified
- ▶ Patented technology utilizing existing power supplied by heat trace sample tubing
- ▶ Requires no external power or natural gas for proper operation
- ▶ Conforms to API 14.1 guidelines for hydrocarbon liquid removal and heat tracing
- ▶ Rated for Class 1, Div 1, Group D locations
- ▶ Remote mount w/ Pony® probe enclosure
- ▶ Optional integration with analyzer enclosures

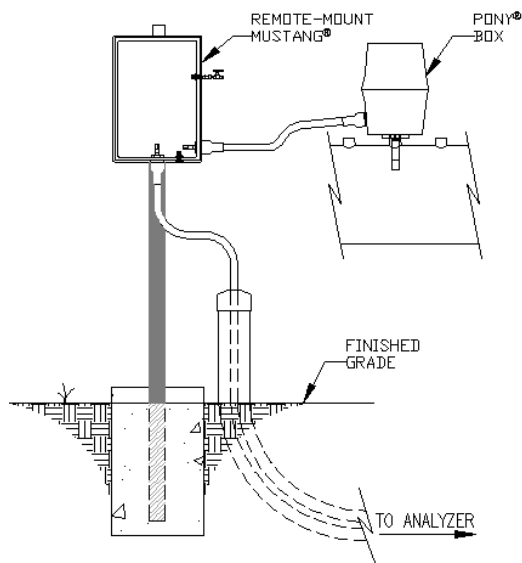


Fig. 1a—Mustang® MSCS Remote Mount
 The remote mount MSCS utilizes a Pony® enclosure over the sample probe for mounting off the pipeline

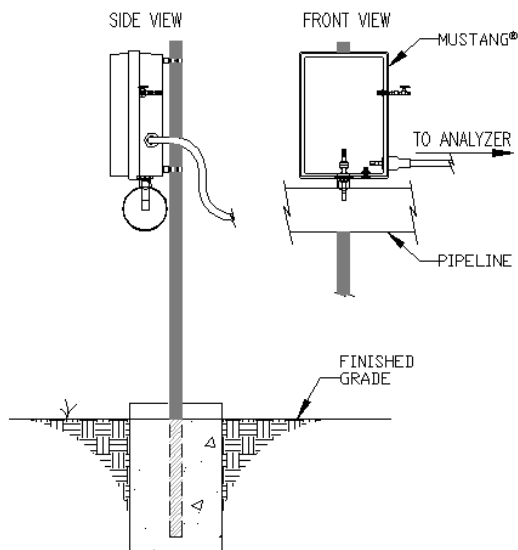


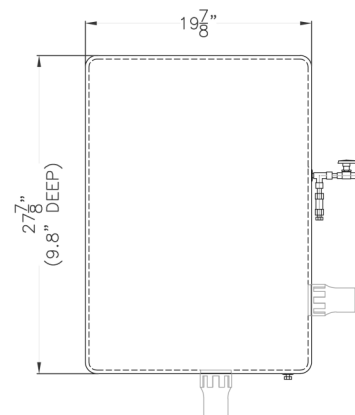
Fig. 1b—Mustang® MSCS Direct Mount w/ Pole
 The direct mount MSCS is mounted directly over the sample probe with a stabilizing pole or pipe saddle

PRODUCT SPECIFICATIONS

Maximum Allowable Operating Pressure	2000 psig (138 BAR) @ 60°F (16°C) w/ Liquid Block upstream of MHR (Standard) 3750 psig (259 BAR) @ 60°F (16°C) w/ Liquid Block downstream of MHR 6000 psig (414 BAR) @ 60°F (16°C) w/ Liquid Block downstream of MJTHR
Regulator	Single-stage MHR or Multi-stage MJTR
Wetted Parts	316 SS
AC Power	120 VAC/240 VAC/24 VDC
Cabinet Sample Volume	0.51 cu. in.
Maintains Sample Gas	Standard set point at 120°F (49°C) Adjustable from 60-400°F (16-204°C)
Cabinet Construction	Hotpressed Glass Fiber Reinforced Polyester (GRP) or Stainless Steel

STANDARD COMPONENTS & DIMENSIONS

- ▶ Pressure gauge after regulator
- ▶ Door-mounted dial thermometer
- ▶ System purge port out
- ▶ Relief valve port out
- ▶ Sample line test port
- ▶ Moisture block drain port out



Mustang Sampling®

info@mustangsampling.com
 www.mustangsampling.com

P 304-273-5357
 F 304-273-2531
 P.O. Box 490
 Ravenswood, WV 26164



Locally Represented By: